

Gateway Cities Subregional Profile

A Labor Market and Community College Analysis

FALL 2024

A report prepared by the
Los Angeles Center of Excellence
for Labor Market Research

TABLE OF CONTENTS

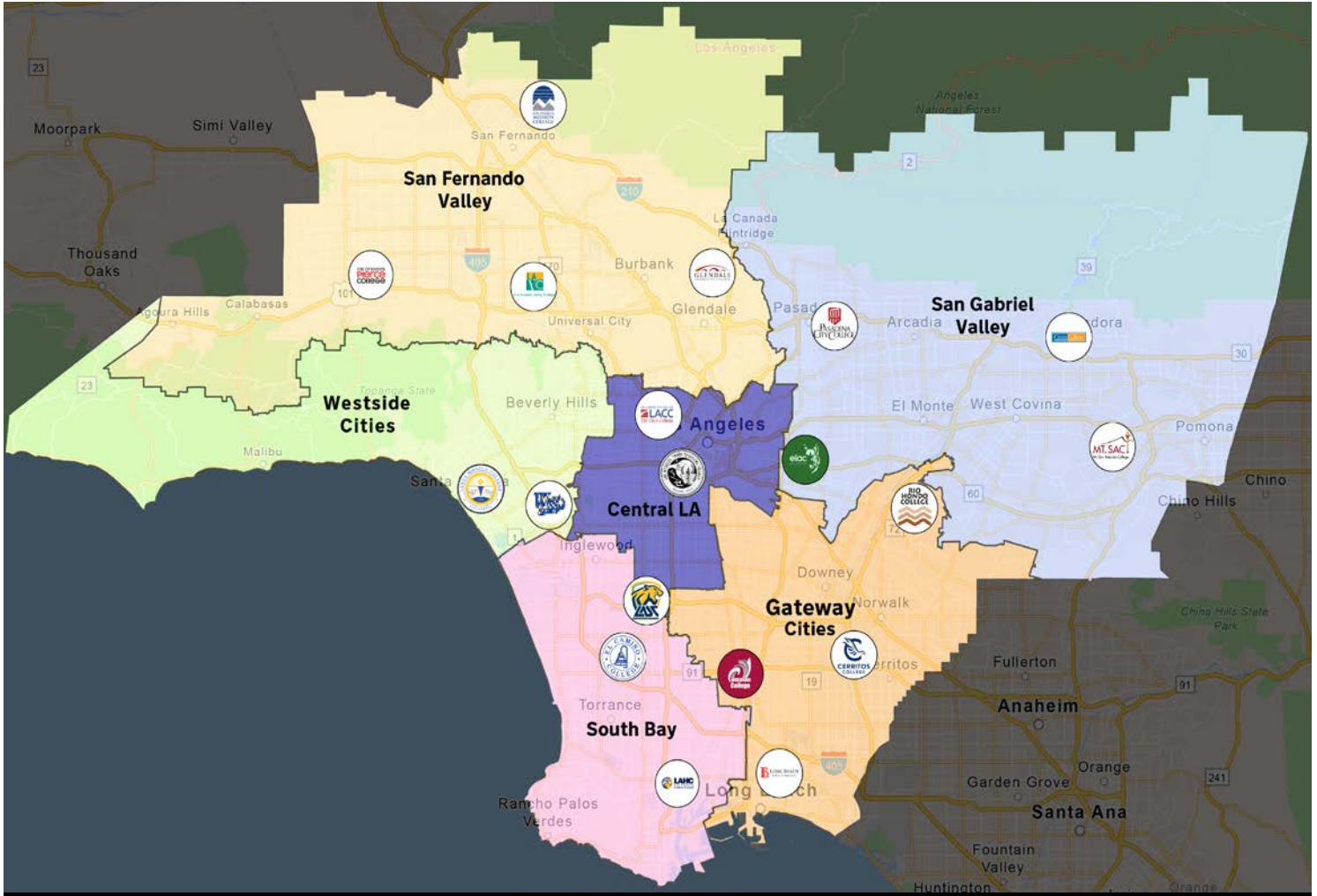
FAST FACTS	3
INTRODUCTION	4
METHODOLOGY	6
PART I: SUBREGIONAL POPULATION CHARACTERISTICS	7
POPULATION DEMOGRAPHICS	8
PART II: LABOR MARKET DEMAND	11
EMPLOYMENT	12
OCCUPATIONAL OVERVIEW	14
JOB POSTINGS	16
PART III: COMMUNITY COLLEGE PROFILES	18
CERRITOS COLLEGE	19
COMPTON COLLEGE	20
LONG BEACH CITY COLLEGE	21
RIO HONDO COLLEGE	22
PART IV: COMMUNITY COLLEGE STUDENT EMPLOYMENT	
OUTCOMES	23
SWP METRICS COMPARISON	24
APPENDIX A: SUBREGIONAL MAPS SHOWING POPULATION CONCENTRATION, HOUSEHOLD INCOME, EDUCATIONAL ATTAINMENT & EMPLOYMENT CONCENTRATION	26
APPENDIX B: SUBREGIONAL ZIP CODES & CITIES	31

FAST FACTS

Exhibit 1. Comparison of demographic and labor market data, Los Angeles County and its subregions

	Central Los Angeles	Gateway Cities	San Fernando Valley	San Gabriel Valley	South Bay	Westside Cities	Los Angeles County
Population	1,550,916	1,814,517	2,026,021	1,879,496	1,100,422	672,503	9,721,138
Households	525,990	555,172	740,109	583,967	390,825	330,795	3,339,544
Median Household Income	\$51,661	\$74,044	\$83,165	\$85,978	\$94,908	\$104,908	\$80,952
Per Capita Income	\$25,935	\$28,662	\$41,440	\$35,408	\$44,795	\$78,530	\$37,855
2023 Unemployment Rate	5.3%	4.8%	5.5%	4.6%	4.3%	5.2%	5.0%
Total 2022 Jobs	710,488	784,614	1,178,742	866,267	686,466	740,524	5,217,897
10-Year Projected Job Growth	8.8%	8.3%	11.4%	8.5%	10.1%	11.4%	9.8%

Exhibit 2. Map of the six subregions and the 19 community colleges in Los Angeles County



LEGEND

COMMUNITY COLLEGES

- | | |
|---------------------|-----------------------------|
| Cerritos | Los Angeles Pierce |
| Citrus | Los Angeles Southwest |
| Compton | Los Angeles Trade-Technical |
| East Los Angeles | Los Angeles Valley |
| El Camino | Mt. San Antonio |
| Glendale | Pasadena City |
| Long Beach City | Rio Hondo |
| Los Angeles City | Santa Monica |
| Los Angeles Harbor | West Los Angeles |
| Los Angeles Mission | |

SUBREGIONS OF LOS ANGELES

- | | |
|---------------------------|----------------------------|
| Central LA | San Fernando Valley |
| Gateway Cities | South Bay |
| San Gabriel Valley | Westside Cities |

Summary of Map: The map of the Community Colleges of the Los Angeles Basin is a visual representation that highlights the educational network of community colleges in the greater Los Angeles area. This map serves as a valuable resource for students, educators, and the community to easily identify and locate the various community colleges situated throughout the region. The map offers a comprehensive overview of the educational landscape, promoting informed decisions for students and contributing to the growth and accessibility of higher education throughout the diverse neighborhoods of Los Angeles.

Map creators: Jason Polanco & The Los Angeles Region Center of Excellence for Labor Market Research



METHODOLOGY

As one of the largest and most diverse counties in the nation, Los Angeles County has an enormous impact on key population and economic indicators in the state. Similarly, its subregions, which encompass 88 cities, are varied and contribute in myriad ways to the region's overall economic vitality and labor market. To put these numbers into context, make them more digestible, and to better understand the factors defining each of the six subregions in the Los Angeles Basin, this report utilizes a number of data sources that shed light on important labor market needs and the role of community colleges in training a local workforce equipped to meet those needs. Expanding upon initial work conducted by the Los Angeles County Economic Development Corporation that divided Los Angeles into six distinct geographic regions, this report is broken into four sections. The methodology for each section, along with associated data sources, is described below:

PART I: SUBREGIONAL POPULATION CHARACTERISTICS

This section describes the population of the subregion. The data is largely sourced from Lightcast's 2023.4 dataset at the county level, as well as by ZIP code (Appendix B). ZIP-code-level data has been aggregated to represent the entire subregion. Educational attainment data represents the population of residents age 25 and older. Lightcast utilizes data collected by the U.S. Census Bureau through the American Community Survey and data from the California Economic Development Department. The race/ethnicity terms in this section, including white, Hispanic, and Black, adhere to the terms and definitions the Census Bureau uses in collecting its data. For definitions, please refer to: <https://www.census.gov/topics/population/race/about.html>.

PART II: LABOR MARKET DEMAND

This section describes the labor market conditions of the subregion, including data on occupations, industries, and job postings, sourced from Lightcast's 2023.4 dataset. Sub-county job posting data is only available at the city level, so the cities listed in Appendix B were queried. Job ads posted during all 12 months of 2023 were analyzed.

PART III: COMMUNITY COLLEGE PROFILES

This section describes the community colleges in the subregion in terms of student counts, awards (certificates and degrees), student demographics, and some career education program outcomes. The data contained in this section is sourced from the California Community Colleges Chancellor's Office Management Information Systems Data Mart and the California Community Colleges LaunchBoard. Student counts are derived from the 2022-23 academic year. Awards represent a three-year average of the 2020-21 to 2022-23 academic years. Median annual earnings after exit, attained a living wage, and median change in earnings are from the 2020-21 academic year.

This report uses race and ethnicity data from LaunchBoard collected by the California Community Colleges. The terms in this section, including white, Hispanic, and Black, adhere to the terms and definitions the California Community Colleges use in collecting its data. For definitions, please refer to: <https://webdata.cccco.edu/ded/std/std10.pdf>.

PART IV: COMMUNITY COLLEGE STUDENT EMPLOYMENT OUTCOMES

This section describes the career education student employment outcomes for each college in the subregion compared to the average across all 19 colleges in the LA County basin. The data come from the California Community Colleges LaunchBoard.

Data Sources: Lightcast (formerly Emsi); Census Bureau's American Community Survey; Bureau of Labor Statistics (BLS); California Employment Development Department, Labor Market Information Division, OES; California Community Colleges Chancellor's Office Management Information Systems (MIS).



PART I: SUBREGIONAL POPULATION CHARACTERISTICS

Understanding the composition of the local population and how it's projected to change can help community colleges in supporting the needs of the subregional and regional workforce.

Changing demographics can impact the demand for educational services. Los Angeles County's population overall is an aging population, meaning there exists a larger proportion of adults over the age of 55 than young children, teens, and residents in their 20s. At the subregional level, this trend may affect student enrollment numbers from K12 through postsecondary education.

For this reason, the Los Angeles COE has included data and findings on whether the subregional population is growing or contracting, as well as findings on population concentration since more demand for education programs may exist in more densely populated areas.

Additionally, examining educational attainment among Hispanic and non-Hispanic residents can illuminate equity gaps, such as whether a larger share of a certain demographic has completed a bachelor's degree compared to high school.

Finally, race/ethnicity analysis in the overall subregional population can be compared with the race/ethnicity composition of individual community colleges or a group of colleges in a subregion. This data can be used to determine if certain race/ethnicity groups are under- or overrepresented at a college or group of colleges.

IN THIS SECTION

- **Population estimates and projections**
- **Population concentrations**
- **Population demographics, including age, educational attainment, and race/ethnicity**

POPULATION DEMOGRAPHICS

POPULATION SIZE

In 2022, the Gateway Cities subregion had a population of 1.8 million residents (Exhibit 3). Over the next 10 years, the population is expected to decrease by nearly 165,300 residents, or 9%, mirroring a broader trend across Los Angeles County.

Exhibit 3. Population estimates and projections in the subregion, 2022-2032

	2022 POPULATION	2032 POPULATION	% CHANGE
Gateway Cities	1,814,517	1,649,223	(9%)
Los Angeles County	9,721,138	8,647,945	(11%)
California	39,029,342	37,856,452	(3%)

POPULATION CONCENTRATION

An analysis of ZIP codes shows areas near Bell Gardens, North Long Beach, Norwalk, and South Gate have the highest concentration of residents in the subregion. The lowest concentration of residents occurs in areas including Artesia, Santa Fe Springs, Signal Hill, and Vernon. All ZIP codes in the subregion are projected to undergo a declining population over the next 10 years. (See Appendix A for more details.)

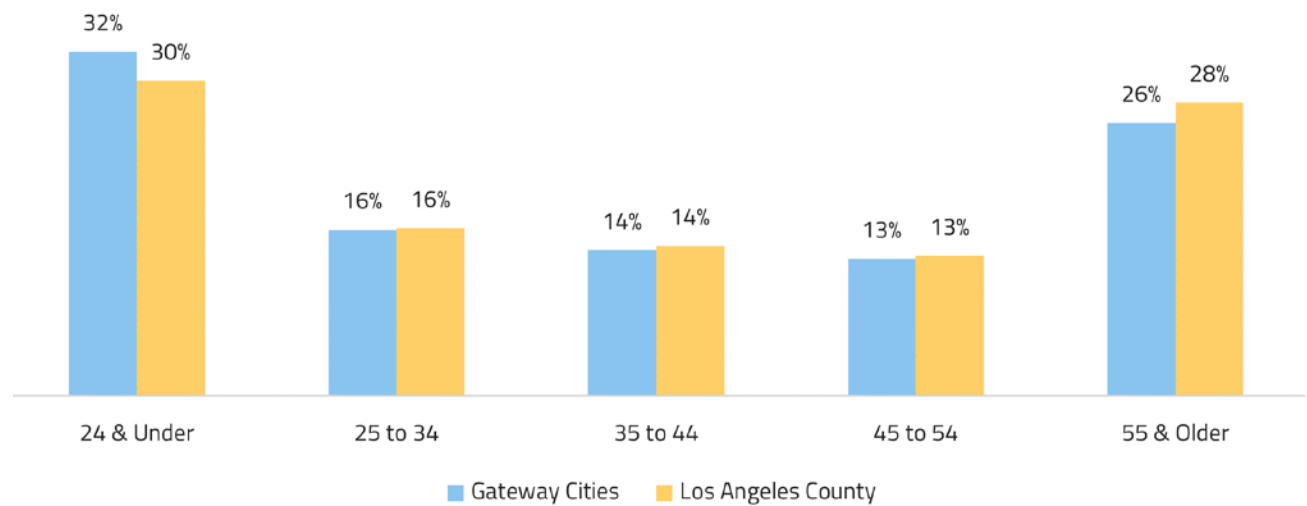
HOUSEHOLD INCOME

Household income is generally highest in ZIP codes in the eastside of the subregion. These areas include Cerritos, Lakewood, Whittier, and parts of Long Beach. ZIP codes with the lowest household incomes are located in areas near Bell Gardens, Huntington Park, Maywood, Vernon, and parts of Long Beach. (See Appendix A for more details.)

AGE

In 2022, 48% of the subregion’s population was under 35 years old (Exhibit 4). Conversely, 26% of the subregion’s population is 55 or older, a lower percentage than the county as a whole.

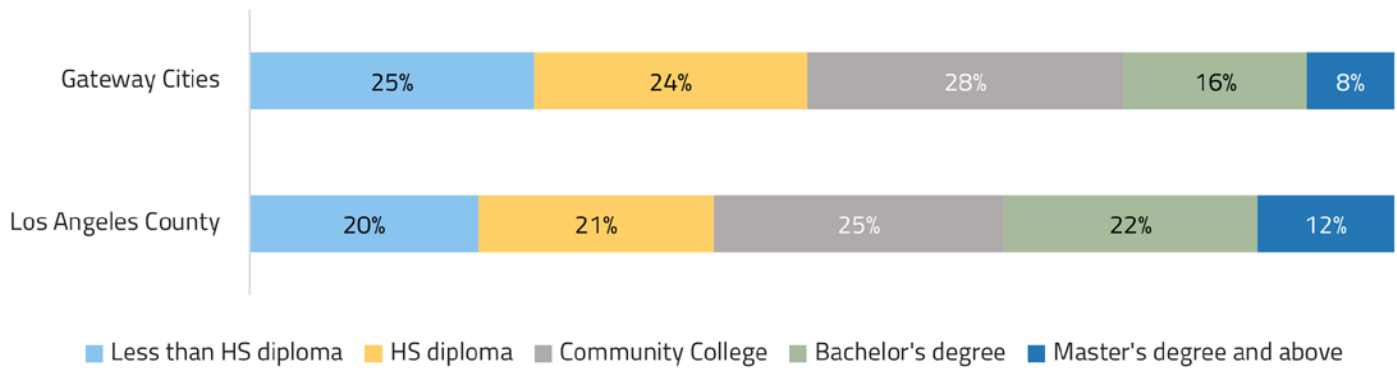
Exhibit 4. Age cohorts comprising the subregion’s population, 2022



EDUCATIONAL ATTAINMENT

In the subregion, 24% of the population over the age of 25 has completed a bachelor’s degree or higher, 28% has completed community college, 24% has completed high school, and 25% has less than a high school diploma (Exhibit 5). Areas with high educational attainment mirror ZIP codes with high income in the east side of the subregion. Areas displaying a higher concentration of residents who have completed a bachelor’s degree or higher include Cerritos and parts of Long Beach. ZIP codes with a lower concentration of residents who have completed a bachelor’s degree or higher include areas in Compton, Huntington Park, Lynwood, Maywood, Pico Rivera, and South Gate. (See Appendix A for more details.)

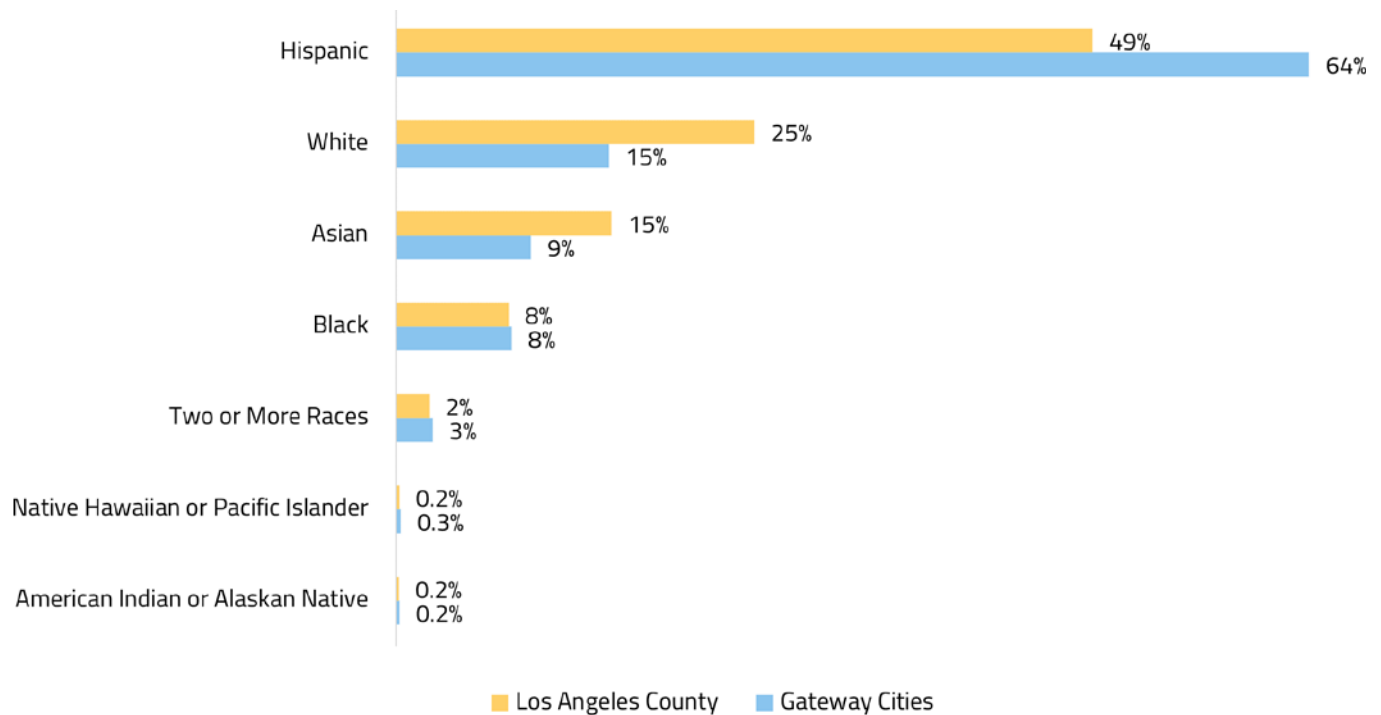
Exhibit 5. Educational attainment in the subregion and region, 2022



RACE/ETHNICITY

In 2022, 64% of the subregion’s population identified as Hispanic, followed by 15% white, and 9% Asian (Exhibit 6). Compared to the county overall, the subregion has a higher percentage of Hispanic and Black residents and a lower percentage of Asian and white residents.

Exhibit 6. Race/ethnicity of the subregional population, 2022



Breaking the subregion’s educational attainment down by race/ethnicity reveals that at 35%, Hispanic residents have the largest share of individuals with less than a high school diploma (Exhibit 7). Conversely, 58% of residents who identify as two or more races, 51% of Asian residents, and 40% of white residents have a bachelor’s degree or higher level of education.

Exhibit 7. Educational attainment of adults 25 years and older by race/ethnicity in the subregion, 2022

	HISPANIC	ASIAN	WHITE	BLACK	TWO OR MORE RACES
Less than high school diploma	35%	12%	6%	10%	31%
High school diploma or higher	65%	88%	94%	90%	69%
Bachelor’s degree or higher	13%	51%	40%	24%	58%

PART II: LABOR MARKET DEMAND

This section can be applied to discussions about cross-industry collaborations, occupational employment opportunities for students, fine tuning partnerships between educators and employers, and exploring new or overlooked areas for training and education programs.

Employment size and concentration have been examined, as well as the subregion's largest industries. Additionally, understanding which occupations are in demand now, and in the future, and what they pay, is critical for community college planning, career pathway development, and targeted employer partnerships.

The Los Angeles COE has identified middle-skill occupations, jobs typically requiring education or training beyond a high school diploma but less than a bachelor's degree, that offer promising career opportunities to students in the subregion. These occupations fall within the sectors designated by the California Community Colleges Chancellor's Office that are critical to the economic vitality of the county.

Further illuminating the nuances within a subregion's labor market, job posting data can indicate employer hiring preferences for specific jobs and skill sets. However, although this data can offer valuable insights into evolving employer needs, it should not be considered a direct measure of employer demand. Job posting totals may be over- or under-inflated for a variety of reasons, such as an employer posting more than one job ad for the same position, using one job posting for multiple openings or for year-round recruitment, or including misleading ads that do not represent actual available positions.

Since employer hiring needs can vary by subregion, job posting analysis can be useful for highlighting unique local employment trends. Occupational titles, employers, skills, and certifications commonly occurring in job postings specific to the subregion have been identified.

IN THIS SECTION

- **Employment size and concentration**
- **Top industries**
- **Occupations that are in demand and well paid**
- **Job posting data**

EMPLOYMENT

EMPLOYMENT SIZE

Between 2022 and 2032, the number of jobs in the subregion is projected to increase from more than 784,600 to more than 850,100, an increase of 65,607 jobs or 8.4%. Comparatively, Los Angeles County and California are projected to grow by more than 508,600 jobs (9.8%) and nearly 2.7 million jobs (13.0%), respectively (Exhibit 8).

Exhibit 8. Number of jobs and projected percentage change, 2022-2032

	2022 JOBS	2032 JOBS	2022-2032 JOB CHANGE	PROJECTED % CHANGE
Gateway Cities	784,614	850,121	65,507	8.4%
Los Angeles County	5,217,897	5,726,508	508,612	9.8%
California	20,378,735	23,032,336	2,653,601	13.0%

EMPLOYMENT CONCENTRATION

The greatest concentration of jobs are shown in ZIP codes in the City of Commerce, Santa Fe Springs, and parts of Long Beach. ZIP codes with the lowest number of jobs include areas in Compton, Lakewood, Maywood, and parts of Whittier. Nearly every ZIP code in the subregion is projected to undergo job growth in the next 10 years, except one ZIP code in Southeast Los Angeles. (See Appendix A for more details.)

INDUSTRY OVERVIEW

In 2022, there were more than 5.2 million jobs in Los Angeles County, with more than 784,600, or approximately 15% of jobs in the subregion. Exhibit 9 shows the industries projected to add the most jobs over the next 10 years.

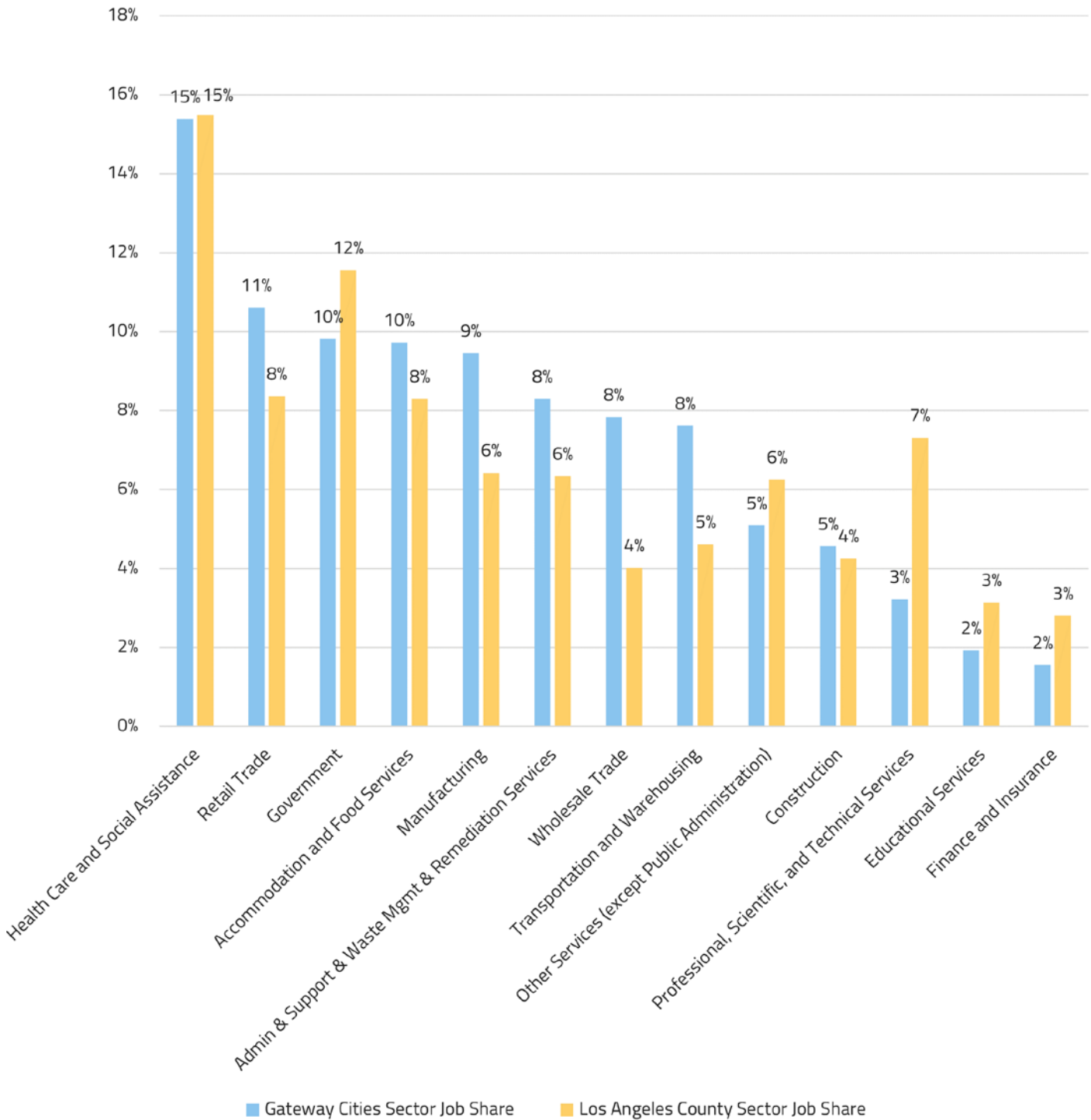
Exhibit 9. Industry sectors projected to add the greatest number of jobs in the subregion, 2022-2032

INDUSTRY SECTOR	2022-2032 CHANGE IN JOBS	PERCENT GROWTH
Health Care and Social Assistance	33,033	27%
Accommodation and Food Services	13,734	18%
Government	8,488	11%
Transportation and Warehousing	5,838	10%
Other Services (except Public Administration)	3,880	9%

The composition of industry employment in the subregion differs from Los Angeles County in several ways. The subregion has a larger share of jobs than Los Angeles County in the following industry sectors (Exhibit 10):

- Retail trade
- Accommodation and food services
- Manufacturing
- Administrative support and waste management and remediation services
- Wholesale trade

Exhibit 10. Industry sector employment in the subregion and Los Angeles County, 2022¹



¹Sectors not shown due to low employment numbers include: Real Estate and Rental and Leasing; Arts, Entertainment, and Recreation; Information; Utilities; Agriculture, Forestry, Fishing and Hunting; Mining, Quarrying, and Oil and Gas Extraction.

OCCUPATIONAL OVERVIEW

The following analysis identifies promising occupations for students that are in demand and well paid in the subregion (Exhibits 11 and 12). For a more extensive list of middle-skill, in-demand occupations or middle-skill occupations that pay a strong median wage, please contact the Los Angeles Center of Excellence.

Exhibit 11. Top 10 occupations in terms of projected annual openings in the subregion

Occupation	Typical Entry-Level Education	2022 Jobs	2022-2032 % Change	Average Annual Openings	Median Hourly Earnings	2022 Employment Concentration
Home Health and Personal Care Aides	High school diploma	48,382	37%	10,157	\$16.26	2.46
Heavy and Tractor-Trailer Truck Drivers	Postsecondary nondegree award	16,344	15%	2,103	\$27.33	1.52
Childcare Workers	High school diploma	7,168	(4%)	1,253	\$17.50	1.25
Customer Service Representatives	High school diploma	9,163	(7%)	1,180	\$21.93	0.64
Sales Representatives, Wholesale and Manufacturing, Except Technical and Scientific Products	High school diploma	12,742	(12%)	1,047	\$31.20	1.92
Registered Nurses	Bachelor's degree	12,761	19%	1,019	\$62.13	0.87
First-Line Supervisors of Food Preparation and Serving Workers	High school diploma	6,030	8%	983	\$21.26	0.96
Nursing Assistants	Postsecondary nondegree award	4,814	28%	921	\$21.28	0.75
Bookkeeping, Accounting, and Auditing Clerks	Some college, no degree	7,965	(9%)	872	\$25.40	0.96
Secretaries and Administrative Assistants, Except Legal, Medical, and Executive	High school diploma	7,839	(7%)	857	\$23.83	0.81

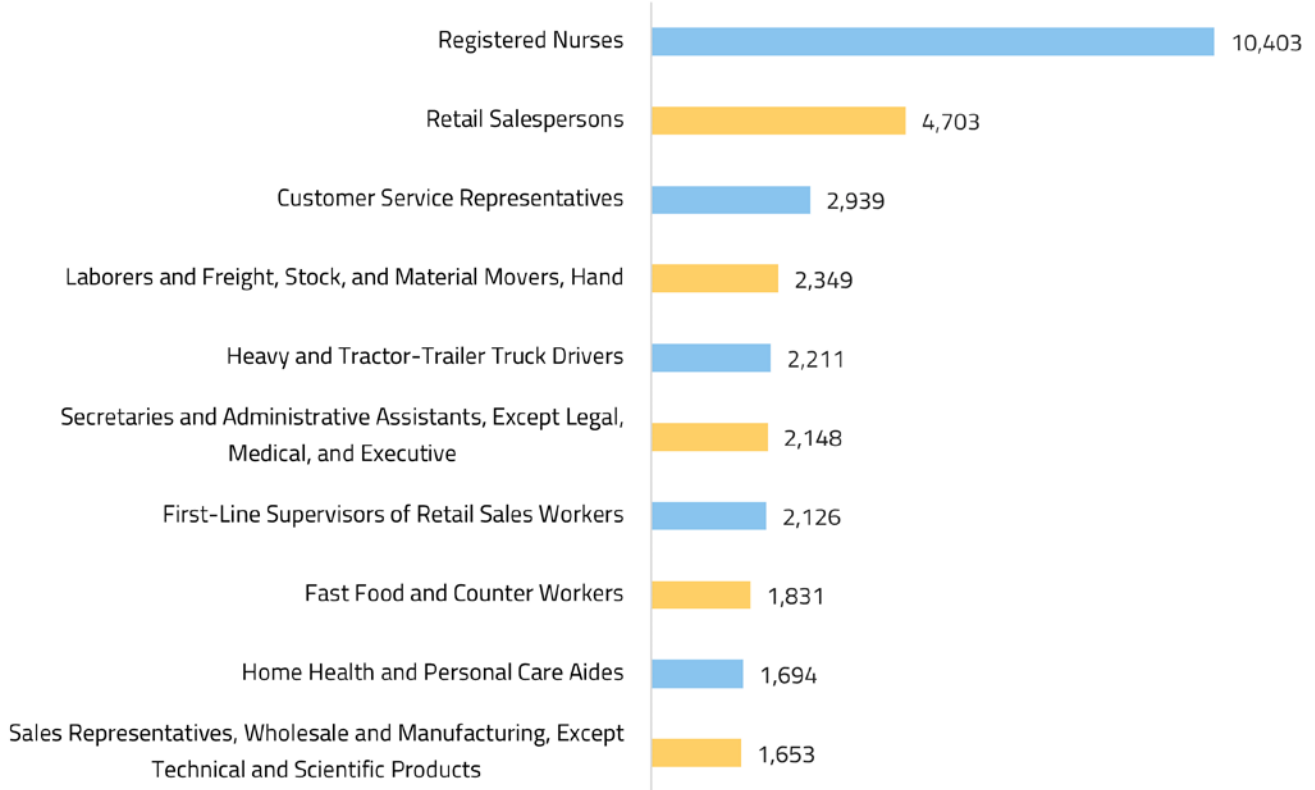
Exhibit 12. Top 10 occupations in terms of highest median wages in the subregion (>20 openings)

Occupation	Typical Entry-Level Education	2022 Jobs	2022-2032 % Change	Average Annual Openings	Median Hourly Earnings	2022 Employment Concentration
First-Line Supervisors of Police and Detectives	High school diploma	469	16%	44	\$84.53	0.68
Commercial Pilots	High school diploma	334	2%	44	\$67.78	0.91
Registered Nurses	Bachelor's degree	12,761	19%	1,019	\$62.13	0.87
Detectives and Criminal Investigators	High school diploma	361	7%	33	\$60.39	0.64
Industrial Production Managers	Bachelor's degree	1,290	(2%)	92	\$57.55	1.24
Dental Hygienists	Associate degree	1,137	8%	98	\$57.03	1.00
Police and Sheriff's Patrol Officers	High school diploma	3,161	5%	291	\$55.57	0.91
Diagnostic Medical Sonographers	Associate degree	322	17%	25	\$49.91	0.80
Special Effects Artists and Animators	Bachelor's degree	252	5%	29	\$49.60	1.07
Petroleum Pump System Operators, Refinery Operators, and Gaugers	High school diploma	316	(16%)	32	\$49.49	1.90

JOB POSTINGS

IN-DEMAND OCCUPATIONS

Exhibit 13. Top occupational titles in job postings, 2023



TOP EMPLOYERS

Exhibit 14. Top employers in job postings, subregion and Los Angeles County, 2023

SUBREGIONAL EMPLOYERS	LOS ANGELES COUNTY EMPLOYERS
PIH Health	University of California
Kaiser Permanente	Northrop Grumman
Healthcare Employment Network	Cedars-Sinai
California State University	Allied Universal
Boeing	Providence
Molina Healthcare	University of Southern California
Robert Half	Boeing
Alta Hospitals SYS	Robert Half
Allied Universal	Randstad
MLK Jr Community Hospital	SpaceX

IN-DEMAND SKILLS

Exhibit 15. Top skills in job postings, 2023

SPECIALIZED SKILLS	SOFT SKILLS	SOFTWARE AND TECHNICAL SKILLS
Nursing	Communication	Microsoft Excel
Merchandising	Customer Service	Microsoft Office
Warehousing	Management	Microsoft Outlook
Marketing	Sales	Microsoft PowerPoint
Auditing	Operations	Microsoft Word
Restaurant Operation	Leadership	Spreadsheets
Project Management	Detail Oriented	SQL (Programming Language)
Accounting	Problem Solving	Operating Systems
Selling Techniques	Planning	Python (Programming Language)
Invoicing	Writing	SAP Applications

PART III: COMMUNITY COLLEGE PROFILES

Community colleges play an integral role in training students to enter middle-skill jobs. By examining unduplicated student counts, how many awards (degrees and certificates) are being earned, and SWP metrics related to student outcomes, programs can be tailored to have the greatest positive impact.

The Los Angeles COE has analyzed CE programs for each community college in the subregion to identify programs that are performing most effectively in terms of advancing the median annual earnings of students after exiting a program, students who are able to attain a living wage after completing a program, and students who obtain a positive median change in earnings after completing a program.

Examining patterns in student demographics, such as race/ethnicity and gender, can help community colleges advance equity and improve academic outcomes for underrepresented students. Additionally, examining the age breakdown of students can show where students may fall in terms of seeking education to further their lifelong careers. If a community college has a significant percentage of students above age 25, this may indicate demand by dislocated workers or incumbent workers seeking to retrain or upskill to access opportunities for career advancement.

IN THIS SECTION

- **Student counts and number of awards**
- **CE programs with strong SWP outcomes**
- **Student demographics, including race/ethnicity, gender, and age**



STUDENT COUNTS

30,614 CERRITOS COLLEGE	523,323 LOS ANGELES REGION
-----------------------------------	--------------------------------------



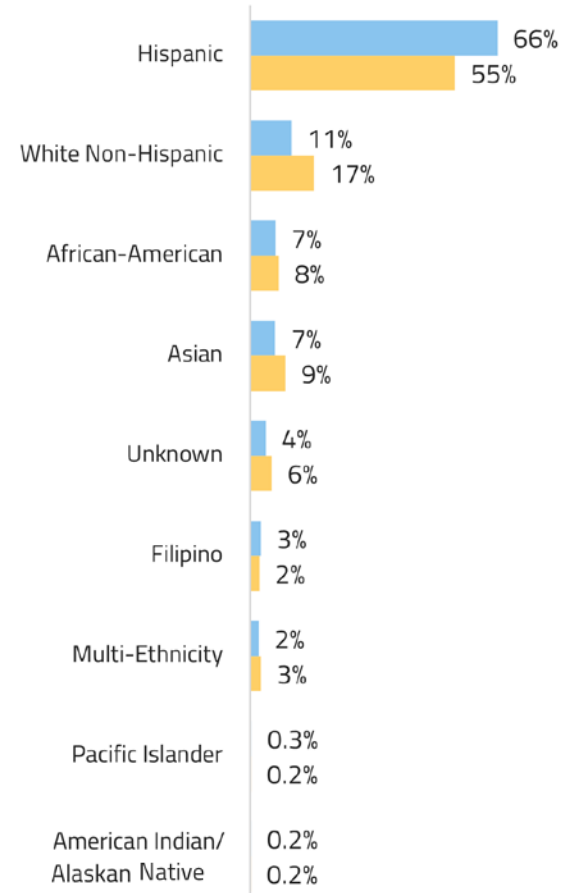
AWARDS (3-YEAR AVERAGE)

5,384 CERRITOS COLLEGE	83,827 LOS ANGELES REGION
----------------------------------	-------------------------------------

SWP OUTCOMES SUMMARY: TOP PERFORMING PROGRAM AREAS

MEDIAN ANNUAL EARNINGS AFTER EXIT	Manufacturing and Industrial Technology	\$88,682
	Fire Technology	\$67,652
	Welding Technology	\$63,176
ATTAINED A LIVING WAGE	Fire Technology	94%
	Manufacturing and Industrial Technology	76%
	Computer Networking	75%
MEDIAN CHANGE IN EARNINGS	Administration of Justice	115%
	Manufacturing and Industrial Technology	109%
	Physical Therapist Assistant	109%

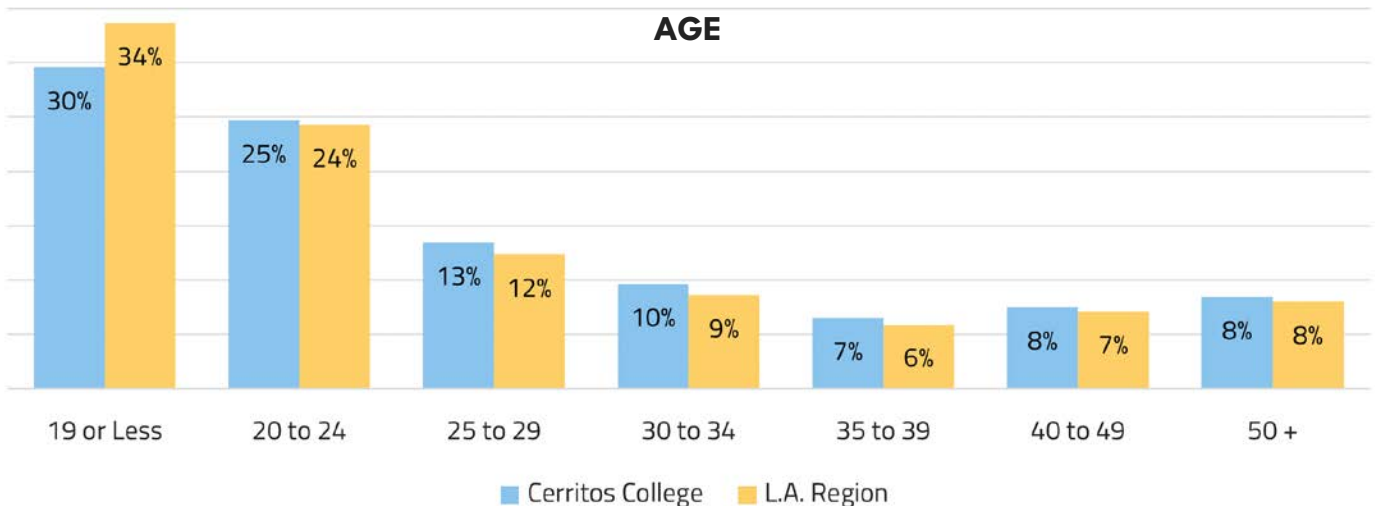
RACE/ETHNICITY



GENDER

	Female	Male	Non-binary	Unknown
Cerritos College	53%	45%	0%	2%
Los Angeles Region	55%	43%	0.4%	2%

AGE





STUDENT COUNTS

6,097 COMPTON COLLEGE	523,323 LOS ANGELES REGION
---------------------------------	--------------------------------------



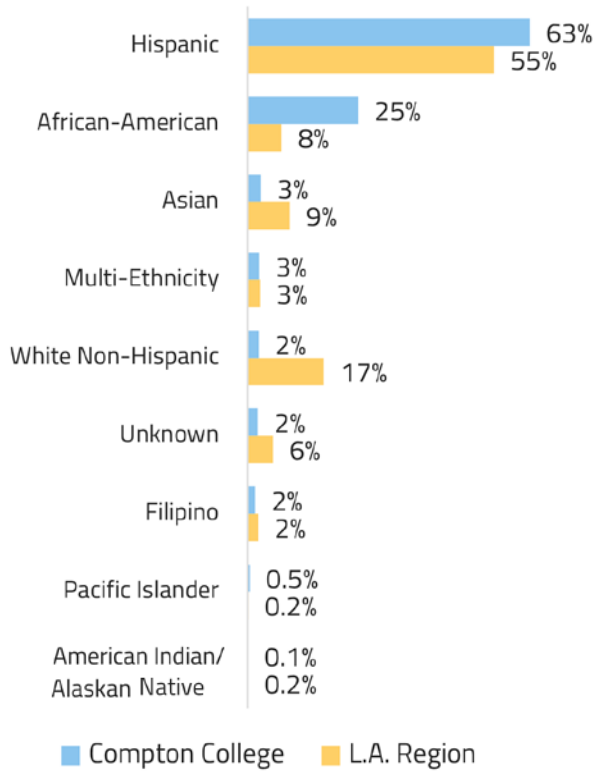
AWARDS (3-YEAR AVERAGE)

934 COMPTON COLLEGE	83,827 LOS ANGELES REGION
-------------------------------	-------------------------------------

SWP OUTCOMES SUMMARY: TOP PERFORMING PROGRAM AREAS

MEDIAN ANNUAL EARNINGS AFTER EXIT	Registered Nursing	\$47,228
	Children with Special Needs	\$40,958
	Welding Technology	\$35,852
ATTAINED A LIVING WAGE	Registered Nursing	58%
	Accounting	44%
	Welding Technology	44%
MEDIAN CHANGE IN EARNINGS	Registered Nursing	41%
	Computer Information Systems	38%
	Welding Technology	35%

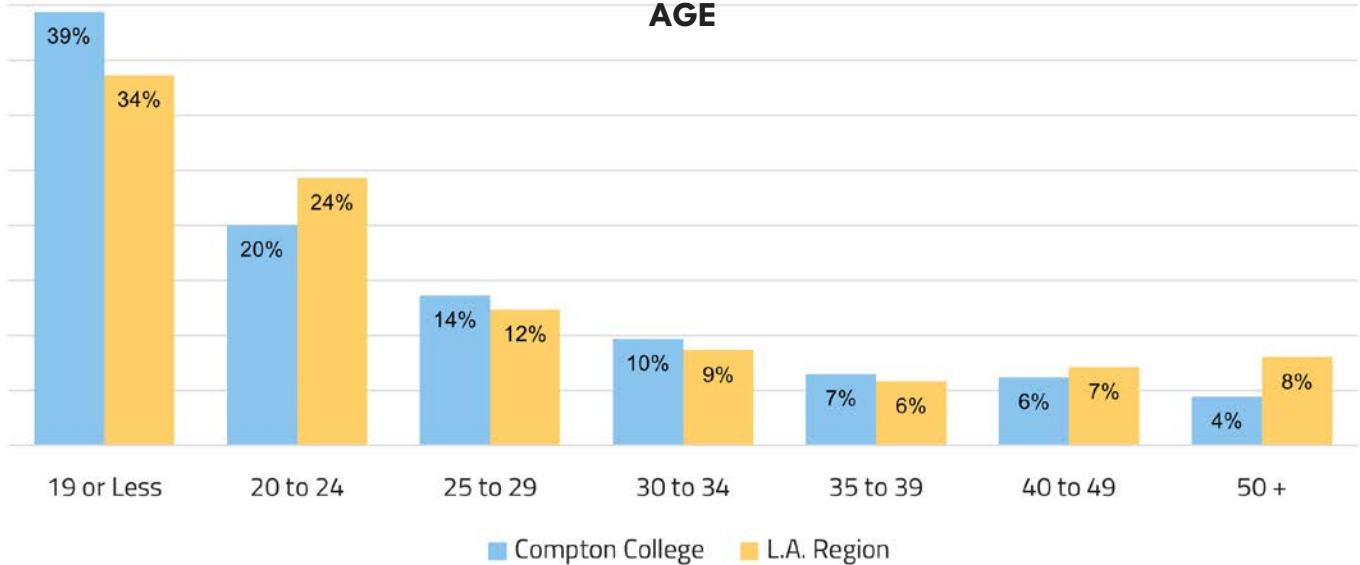
RACE/ETHNICITY



GENDER

	Female	Male	Non-binary	Unknown
Compton College	63%	35%	0%	2%
Los Angeles Region	55%	43%	0.4%	2%

AGE





STUDENT COUNTS

34,680

LONG BEACH CITY COLLEGE

523,323

LOS ANGELES REGION



AWARDS (3-YEAR AVERAGE)

5,406

LONG BEACH CITY COLLEGE

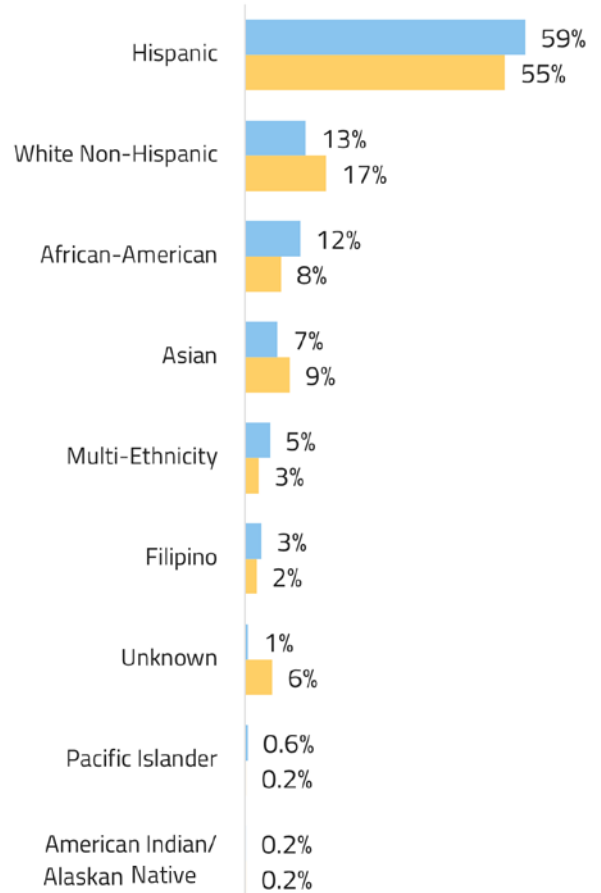
83,827

LOS ANGELES REGION

SWP OUTCOMES SUMMARY: TOP PERFORMING PROGRAM AREAS

MEDIAN ANNUAL EARNINGS AFTER EXIT	Radiologic Technology	\$77,576
	Management Development and Supervision	\$59,780
	Business Management	\$52,016
ATTAINED A LIVING WAGE	Radiologic Technology	91%
	Management Development and Supervision	71%
	Business Management	63%
MEDIAN CHANGE IN EARNINGS	Marketing and Distribution	83%
	Architecture and Architectural Technology	76%
	Licensed Vocational Nursing	70%

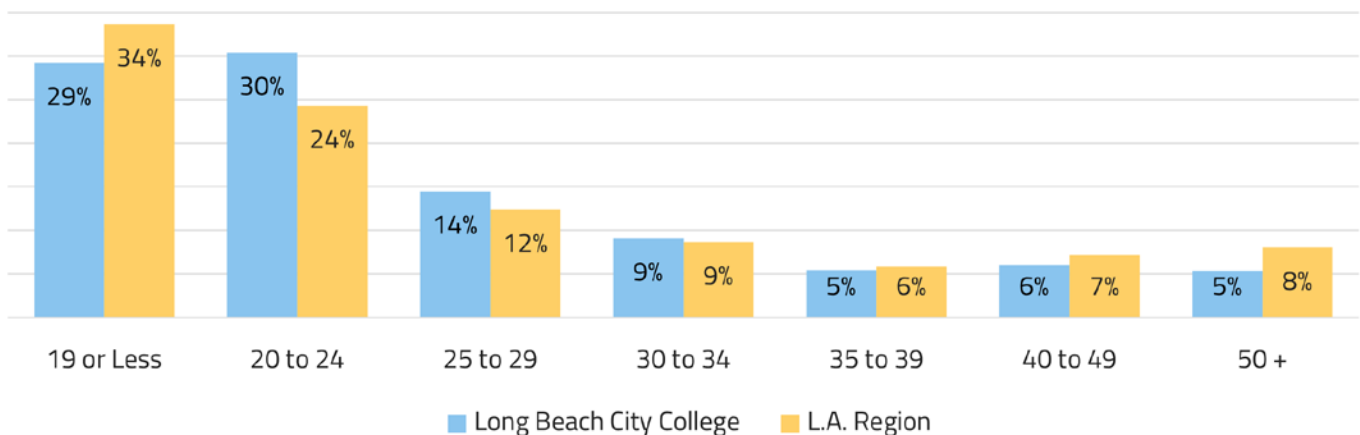
RACE/ETHNICITY



GENDER

	Female	Male	Non-binary	Unknown
Los Beach City College	57%	41%	1%	2%
Los Angeles Region	55%	43%	0.4%	2%

AGE





STUDENT COUNTS

28,241 RIO HONDO COLLEGE	523,323 LOS ANGELES REGION
------------------------------------	--------------------------------------



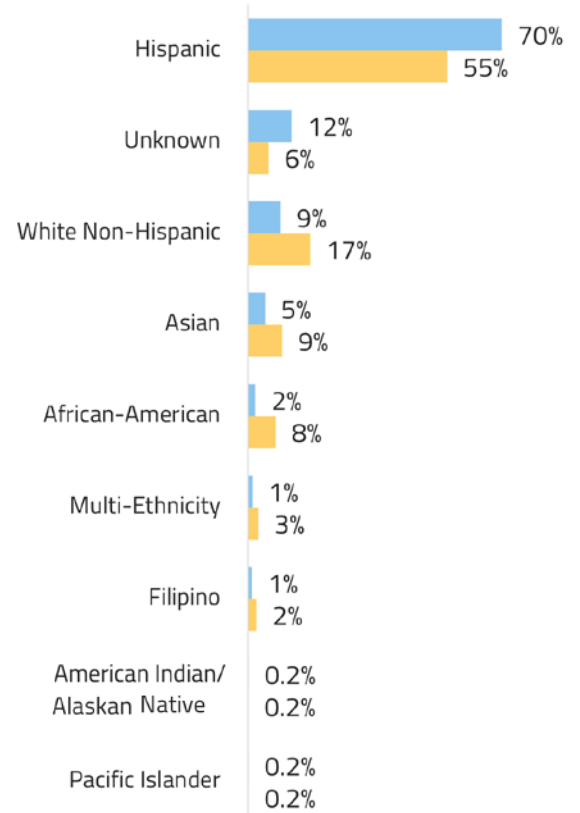
AWARDS (3-YEAR AVERAGE)

4,022 RIO HONDO COLLEGE	83,827 LOS ANGELES REGION
-----------------------------------	-------------------------------------

SWP OUTCOMES SUMMARY: TOP PERFORMING PROGRAM AREAS

MEDIAN ANNUAL EARNINGS AFTER EXIT	Fire Academy	\$116,992
	Corrections	\$89,946
	Administration of Justice	\$82,020
ATTAINED A LIVING WAGE	Fire Academy	89%
	Geographic Information Systems	78%
	Administration of Justice	76%
MEDIAN CHANGE IN EARNINGS	Infants and Toddlers	130%
	Carpentry	110%
	Computer Programming	103%

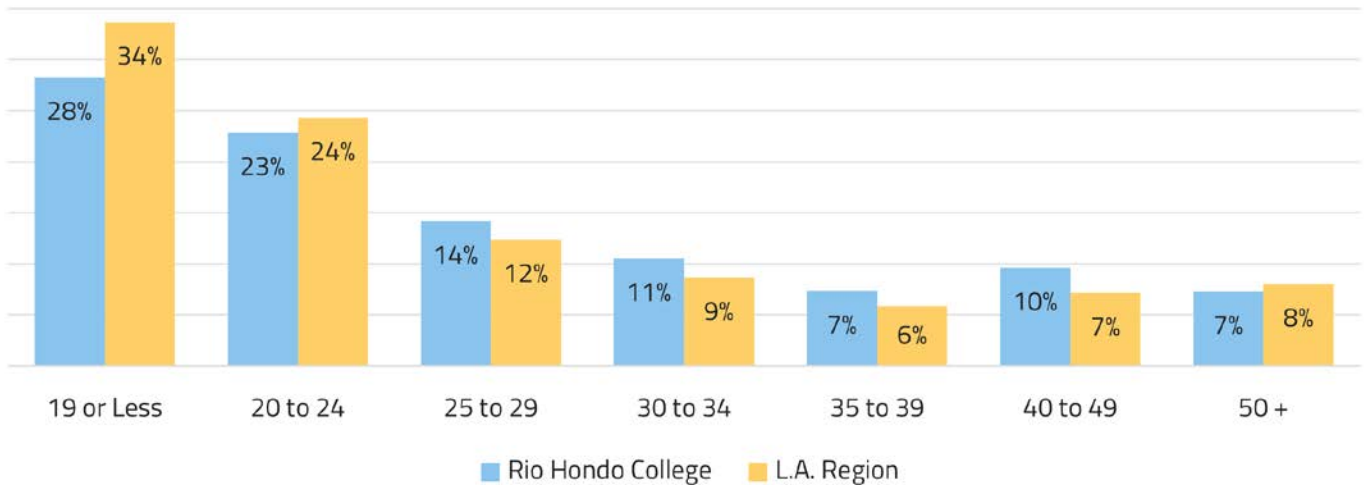
RACE/ETHNICITY



GENDER

	Female	Male	Non-binary	Unknown
Rio Hondo College	41%	57%	0%	2%
Los Angeles Region	55%	43%	0.4%	2%

AGE



PART IV: COMMUNITY COLLEGE STUDENT EMPLOYMENT OUTCOMES

Through LaunchBoard, the California Community Colleges Chancellor's Office collects data related to SWP metrics which are used to track student progress, credential attainment, and employment outcomes. These metrics can be applied to measuring the progress of community colleges toward meeting regional SWP goals.

The SWP metrics included in this section are:

- **Attained a living wage**—Among SWP students who exited a community college and did not transfer to any postsecondary institution, this is the proportion who attained the district county living wage for a single adult measured immediately following the academic year of exit.
- **Median annual earnings**—Among SWP students who exited the community college system and who did not transfer to any postsecondary institution, these represent median earnings following the academic year of exit.
- **Median change in earnings**—Among SWP students who exited and who did not transfer to any postsecondary institution, median change in earnings are calculated between the second quarter prior to the beginning of the academic year of entry (for the first time ever as a non-Special Admit or return to any community college after an absence of one or more academic years) and the second quarter after the end of the academic year of exit from the last college attended.
- **Attained a job closely related to field of study**—Among students who responded to the CTE Outcomes Survey and did not transfer to any postsecondary institution, this is the proportion who reported that they are working in a job very closely or closely related to their field of study.

IN THIS SECTION

- **SWP metrics for individual community colleges in the subregion compared to the overall region: attained a living wage, median annual earnings, median change in earnings, attained a job closely related to field of study**

SWP METRICS COMPARISON

Exhibit 16. Comparison of students who attained a living wage by college and Los Angeles regional average

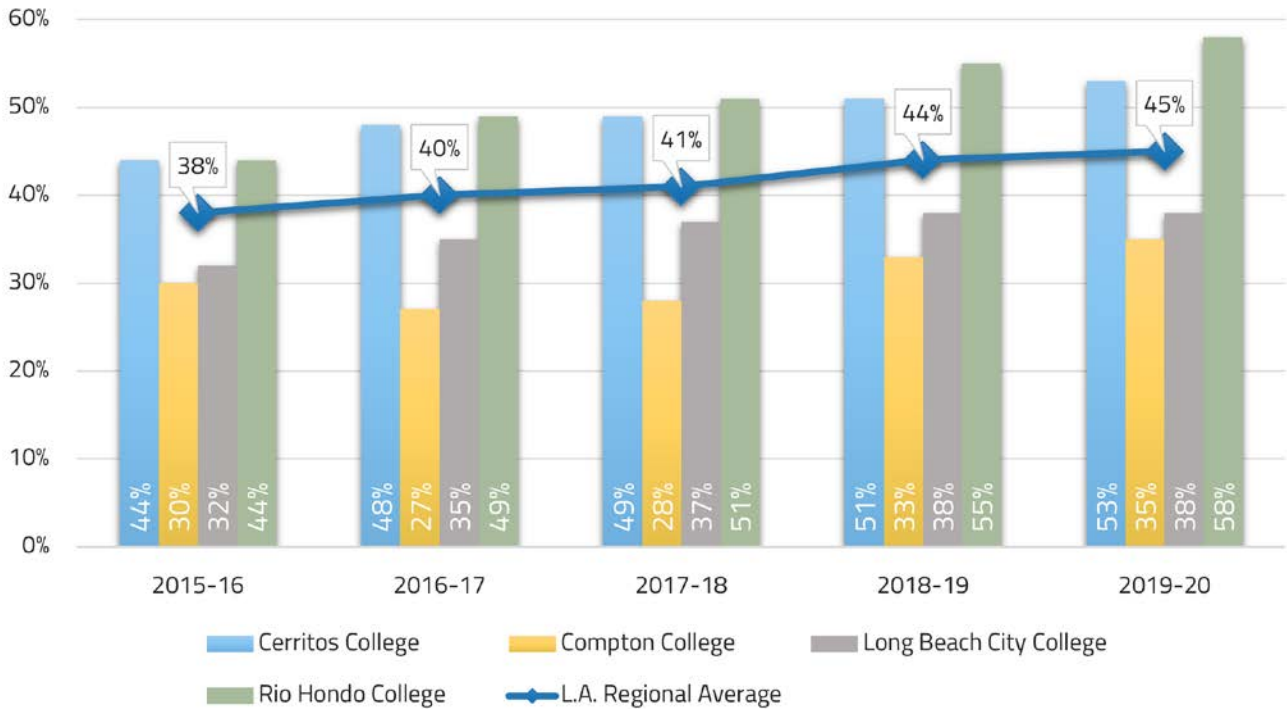


Exhibit 17. Comparison of median annual earnings by college and Los Angeles regional average

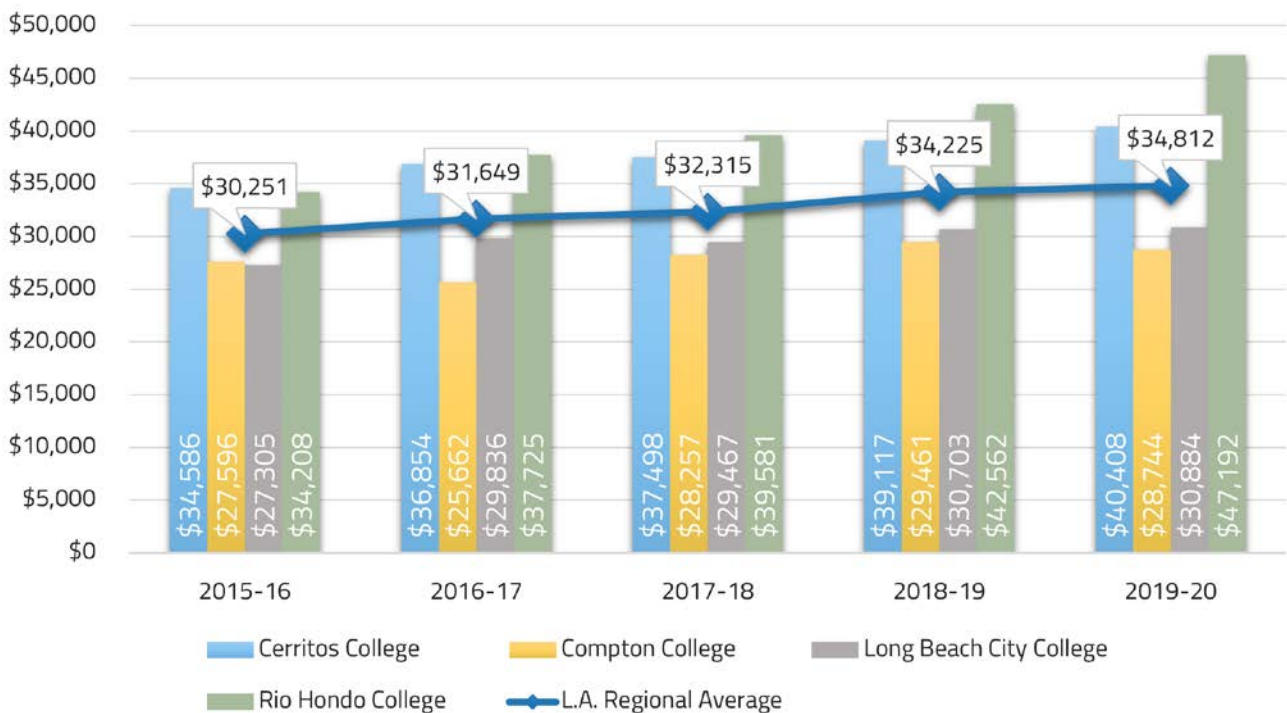


Exhibit 18. Comparison of median change in earnings by college and Los Angeles regional average

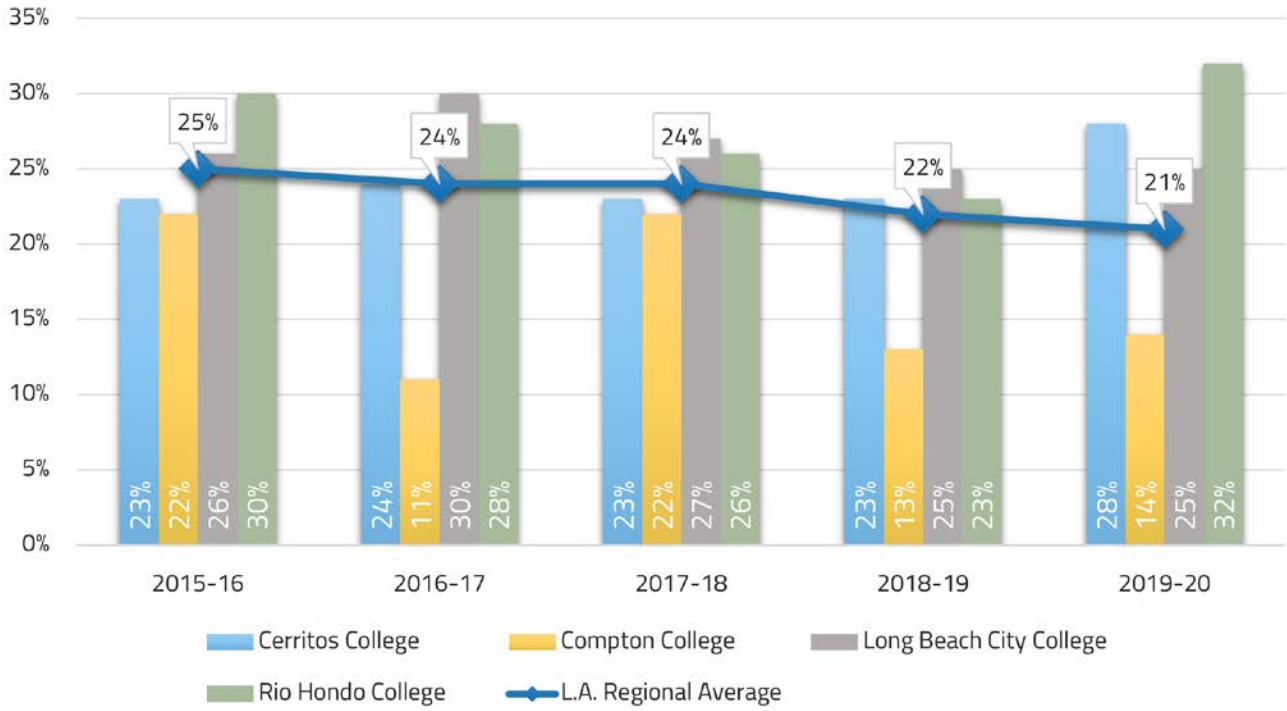
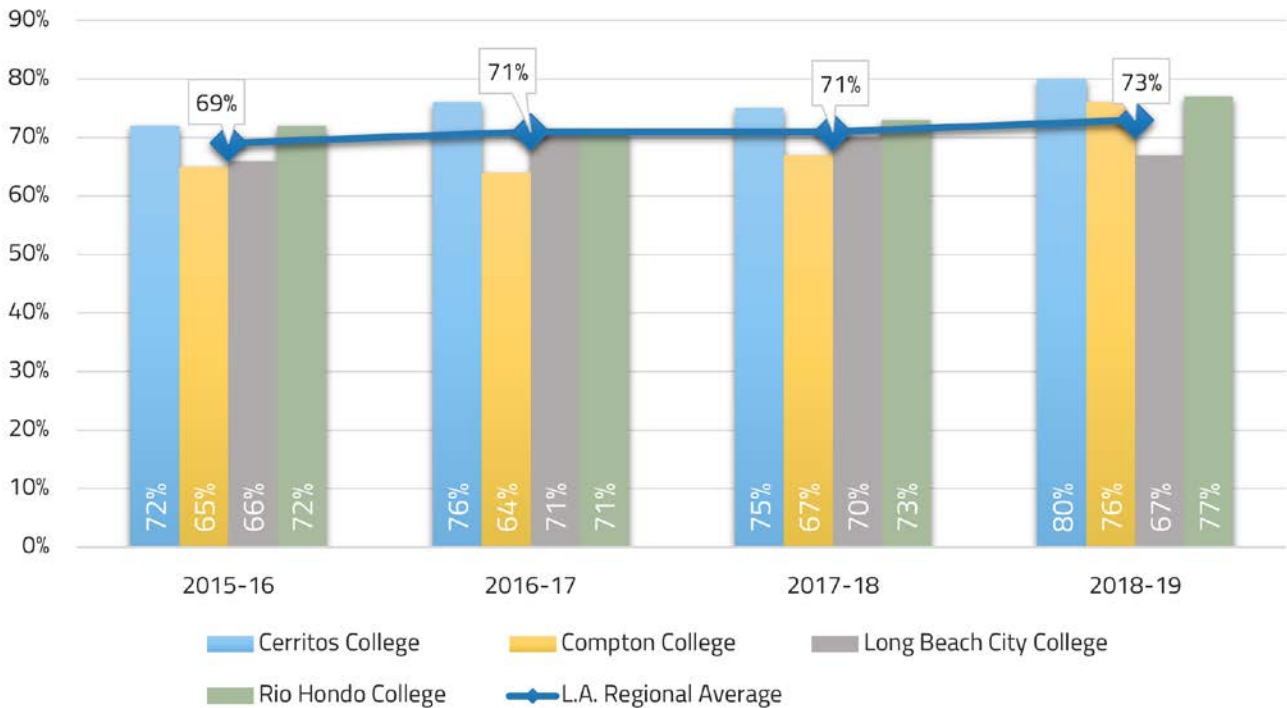


Exhibit 19. Comparison of students who attained a job closely related to field of study by college and Los Angeles regional average

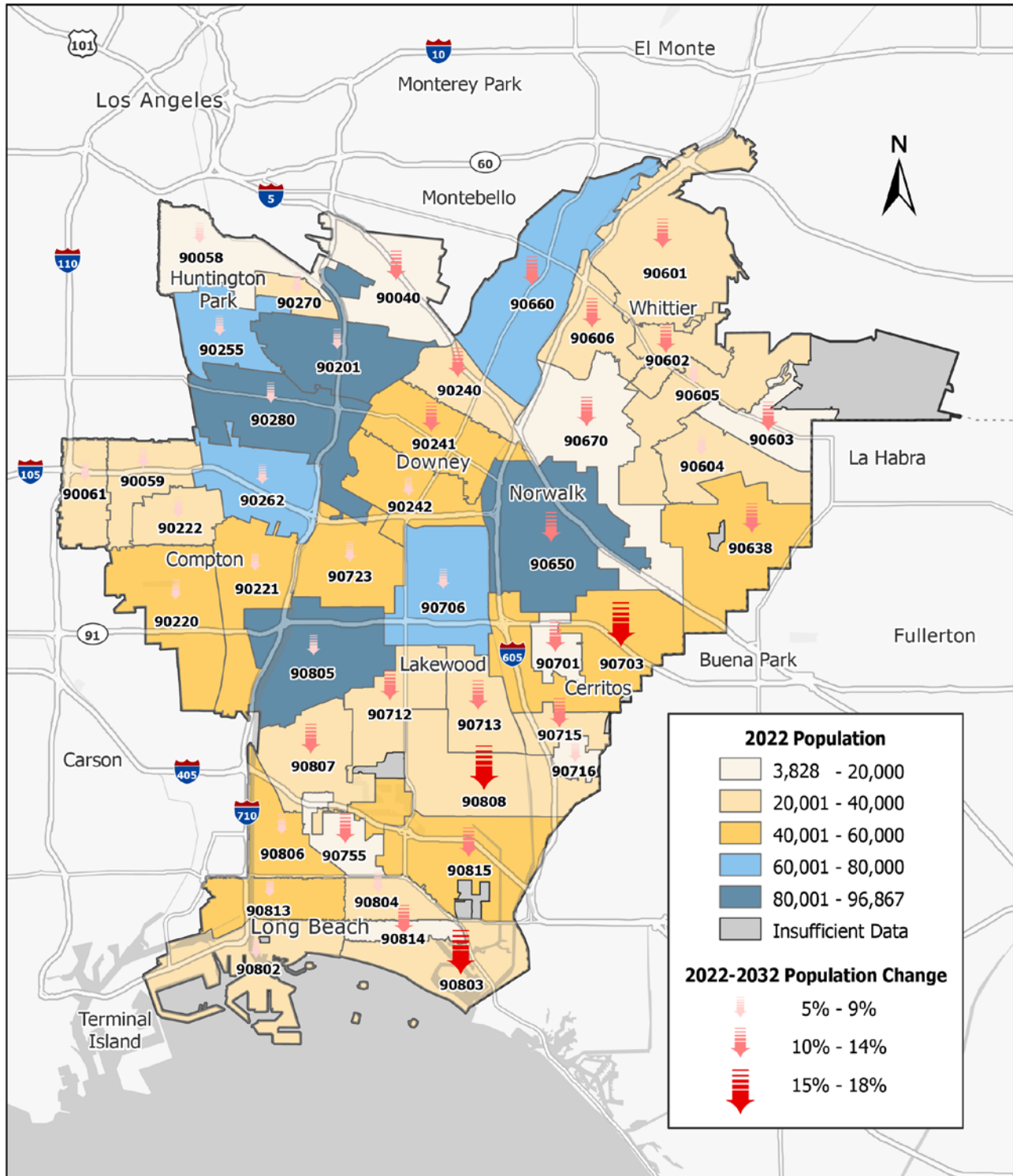


APPENDIX A:

SUBREGIONAL MAPS SHOWING POPULATION CONCENTRATION, HOUSEHOLD INCOME, EDUCATIONAL ATTAINMENT & EMPLOYMENT CONCENTRATION

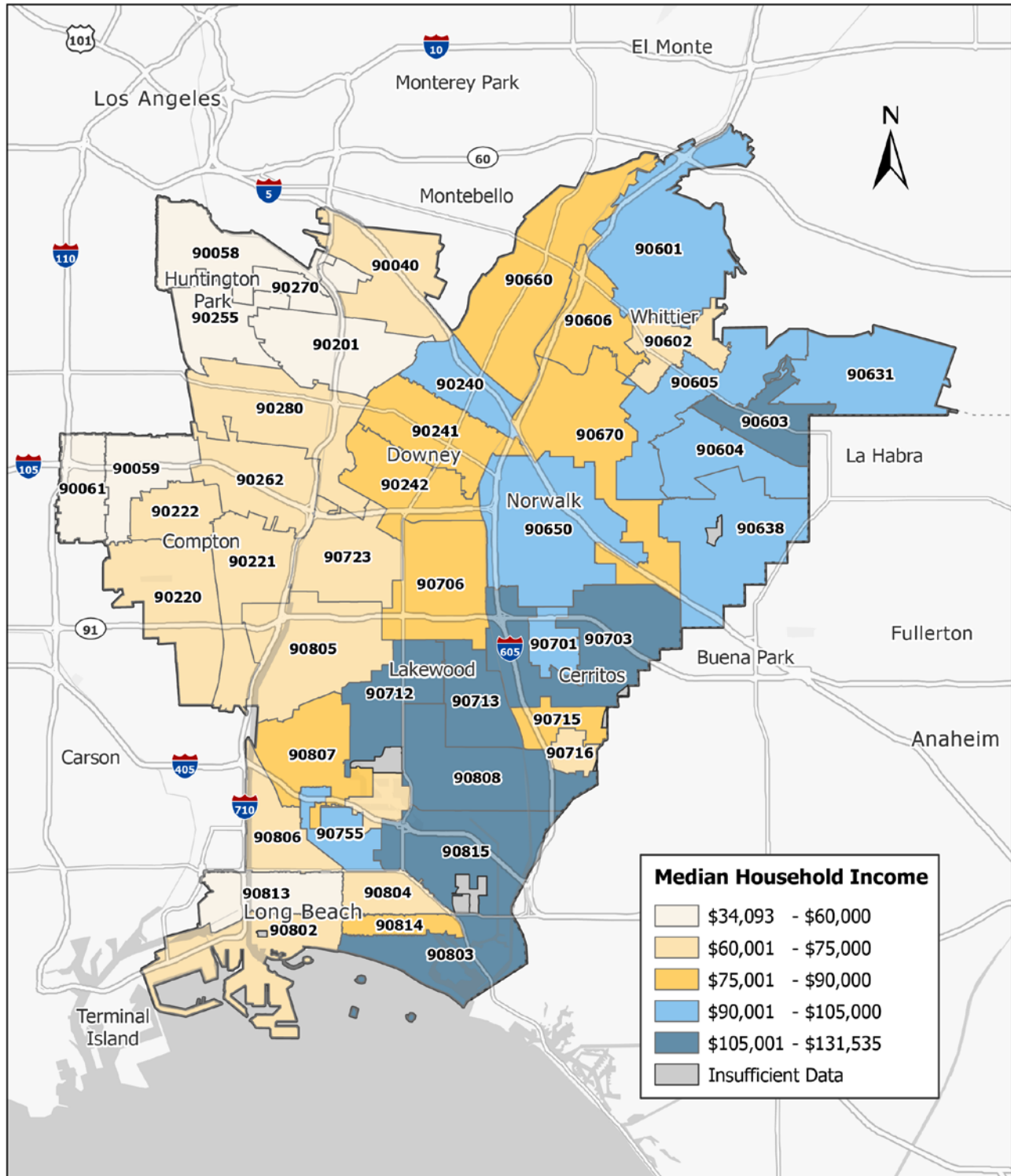


Exhibit A1. Population concentration in the Gateway Cities subregion



Source:
Lightcast, datarun 2023.4
County of Los Angeles, Internal Services Department Enterprise GIS Section. LA County ZIP Codes. <https://arcg.is/yC5rX2>
City of Long Beach, County of Los Angeles, California State Parks, Esri, TomTom, Garmin, SafeGraph, METI/NASA, USGS, Bureau of Land Management, EPA, NPS, USDA, USFWS

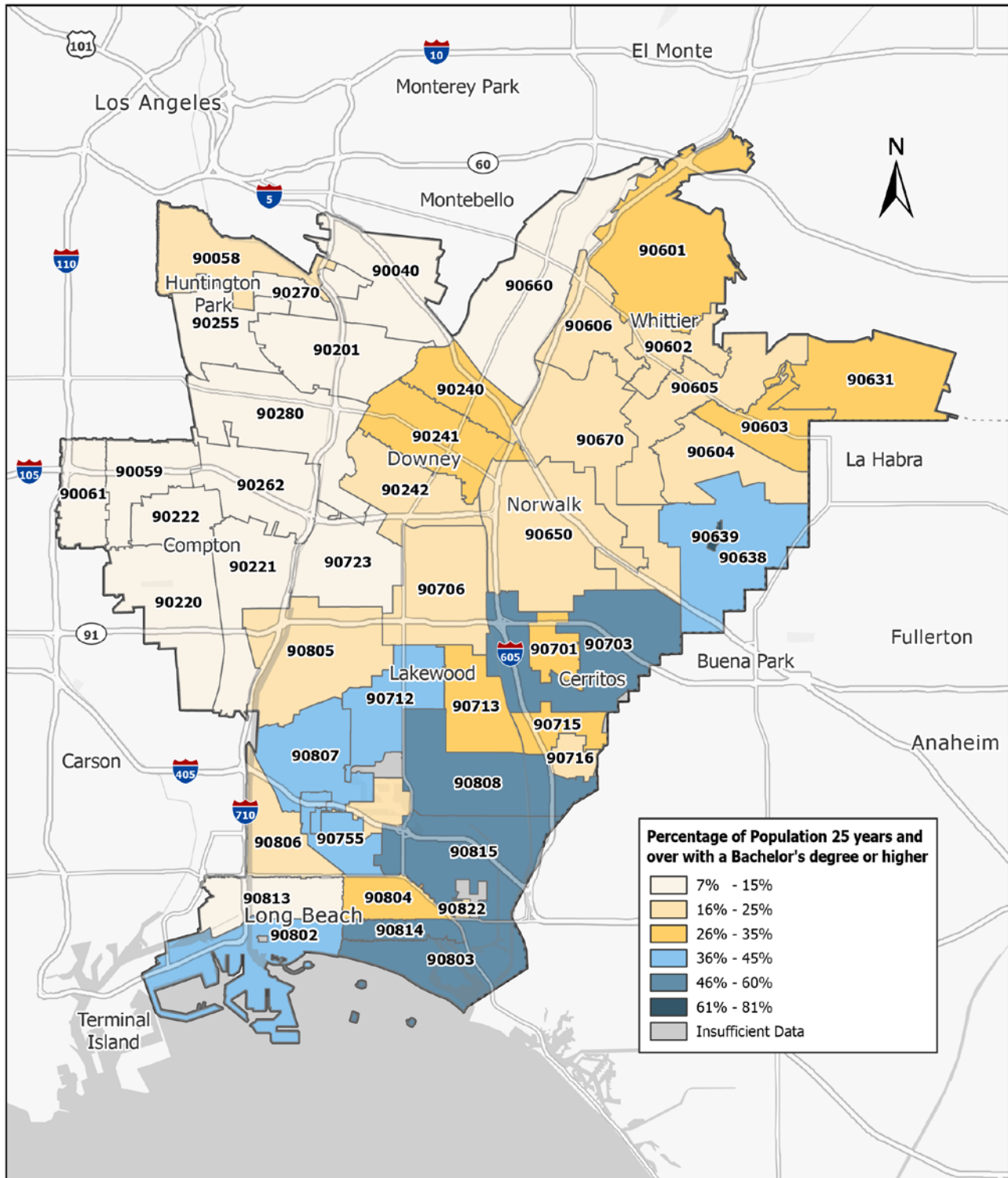
Exhibit A2. Household income in the Gateway Cities subregion



Source:

U.S. Census Bureau, American Community Survey S1903 (Median Income in the Past 12 Months) 5-year estimates for 2022
 County of Los Angeles, Internal Services Department Enterprise GIS Section. LA County ZIP Codes. <https://arcg.is/yC5rX2>
 City of Long Beach, County of Los Angeles, California State Parks, Esri, TomTom, Garmin, SafeGraph, METI/NASA, USGS, Bureau of
 Land Management, EPA, NPS, USDA, USFWS

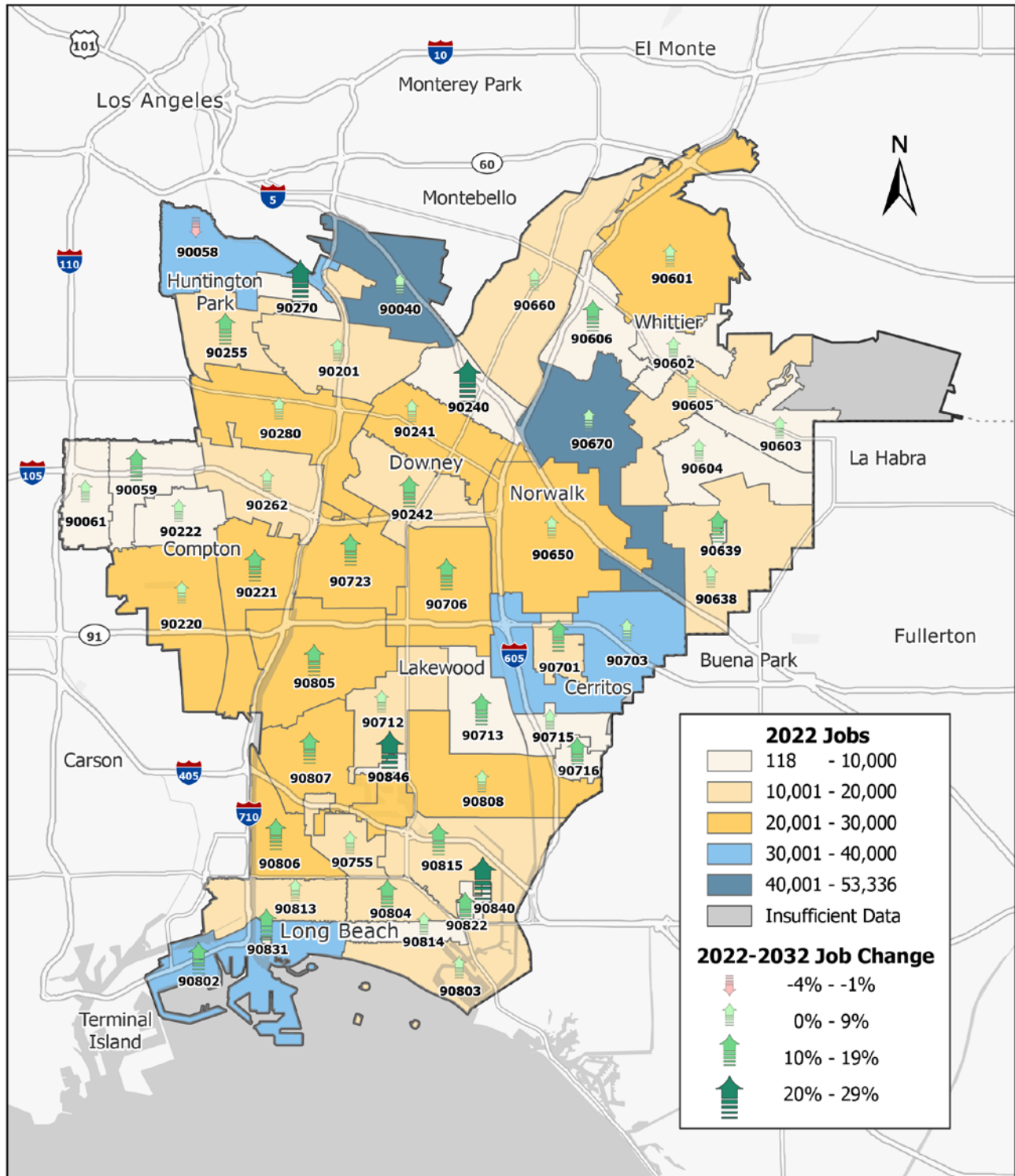
Exhibit A3. Educational attainment in the Gateway Cities subregion



Source:

U.S. Census Bureau, American Community Survey S1501 Educational Attainment 5-year estimates for 2022
 County of Los Angeles, Internal Services Department Enterprise GIS Section. LA County ZIP Codes. <https://arcg.is/yC5rX2>
 City of Long Beach, County of Los Angeles, California State Parks, Esri, TomTom, Garmin, SafeGraph, METI/NASA, USGS, Bureau of Land Management, EPA, NPS, USDA, USFWS

Exhibit A4. Employment concentration in the Gateway Cities subregion



Source:

Lightcast, datarun 2023.4

County of Los Angeles, Internal Services Department Enterprise GIS Section. LA County ZIP Codes. <https://arcg.is/yC5rX2>

City of Long Beach, County of Los Angeles, California State Parks, Esri, TomTom, Garmin, SafeGraph, METI/NASA, USGS, Bureau of Land Management, EPA, NPS, USDA, USFWS

APPENDIX B:

SUBREGIONAL ZIP CODES & CITIES



Exhibit B1. ZIP codes and cities comprising the Gateway Cities subregion

ZIP CODE	CITY	ZIP CODE	CITY
90040	Los Angeles	90661	Pico Rivera
90051	Los Angeles	90662	Pico Rivera
90052	Los Angeles	90670	Santa Fe Springs
90058	Los Angeles	90671	Santa Fe Springs
90059	Los Angeles	90701	Artesia
90061	Los Angeles	90702	Artesia
90091	Los Angeles	90703	Cerritos
90096	Los Angeles	90706	Bellflower
90201	Bell Gardens	90707	Bellflower
90202	Bell	90711	Lakewood
90220	Compton	90712	Lakewood
90221	Compton	90713	Lakewood
90222	Compton	90714	Lakewood
90223	Compton	90715	Lakewood
90224	Compton	90716	Hawaiian Gardens
90239	Downey	90723	Paramount
90240	Downey	90755	Signal Hill
90241	Downey	90801	Long Beach
90242	Downey	90802	Long Beach
90255	Huntington Park	90803	Long Beach
90262	Lynwood	90804	Long Beach
90270	Maywood	90805	Long Beach
90280	South Gate	90806	Long Beach
90601	Whittier	90807	Long Beach
90602	Whittier	90808	Long Beach
90603	Whittier	90809	Long Beach
90604	Whittier	90813	Long Beach
90605	Whittier	90814	Long Beach
90606	Whittier	90815	Long Beach
90607	Whittier	90822	Long Beach
90608	Whittier	90831	Long Beach
90609	Whittier	90832	Long Beach
90610	Whittier	90833	Long Beach
90631	La Habra	90840	Long Beach
90637	La Mirada	90842	Long Beach
90638	La Mirada	90844	Long Beach
90639	La Mirada	90846	Long Beach
90650	Norwalk	90847	Long Beach
90651	Norwalk	90848	Long Beach
90652	Norwalk	90853	Long Beach
90660	Pico Rivera		



#19STRONG. COMMUNITY & COLLEGES
TRANSFORMING FUTURES.

LOSANGELESRC.ORG

If for any reason this document is not accessible or if you have specific needs for readability, please contact us and we will do our utmost to accommodate you with a modified version.

Contact: Luke Meyer, Director | Los Angeles Center of Excellence | Lmeyer7@mtsac.edu



Important Disclaimer: All representations included in this report have been produced from primary research and/or secondary review of publicly and/or privately available data and/or research reports. Efforts have been made to qualify and validate the accuracy of the data and the reported findings; however, neither the Centers of Excellence, COE host district, nor California Community Colleges Chancellor's Office are responsible for applications or decisions made by recipient community colleges or their representatives based upon components or recommendations contained in this study.

© 2024 California Community Colleges Chancellor's Office,
Centers of Excellence for Labor Market Research, Economic and Workforce Development Program